

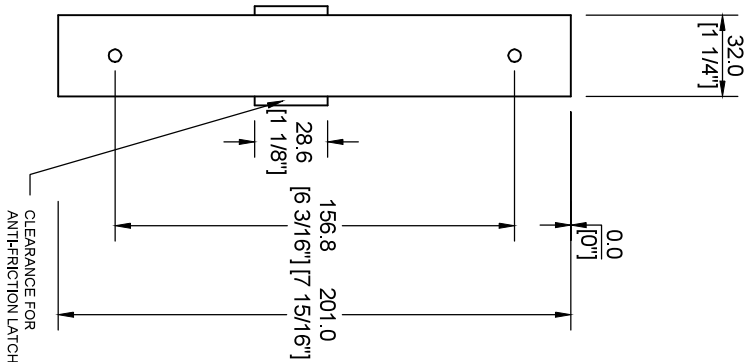
MODEL AA 1748
2 3/4" BACKSET MORTISE LOCK TEMPLATE
 LEVER X LEVER

MORTISE LOCK WITH BACKSET 2 3/4"

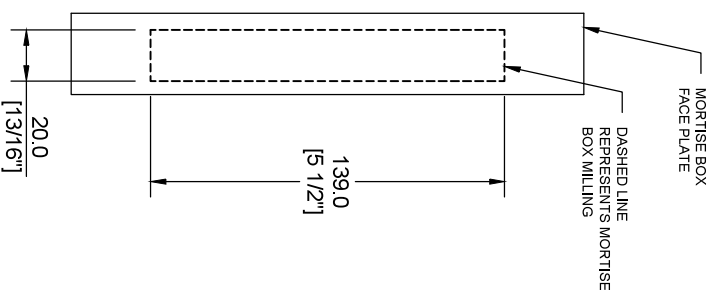
- RESPONSIBILITY: Door and frame manufacturers are responsible for providing adequate construction or reinforcement for proper installation of hardware shown.
- THROUGH BOLTING ONLY IF REQUIRED. See AHI Hardware standard templates for details.

NOTES

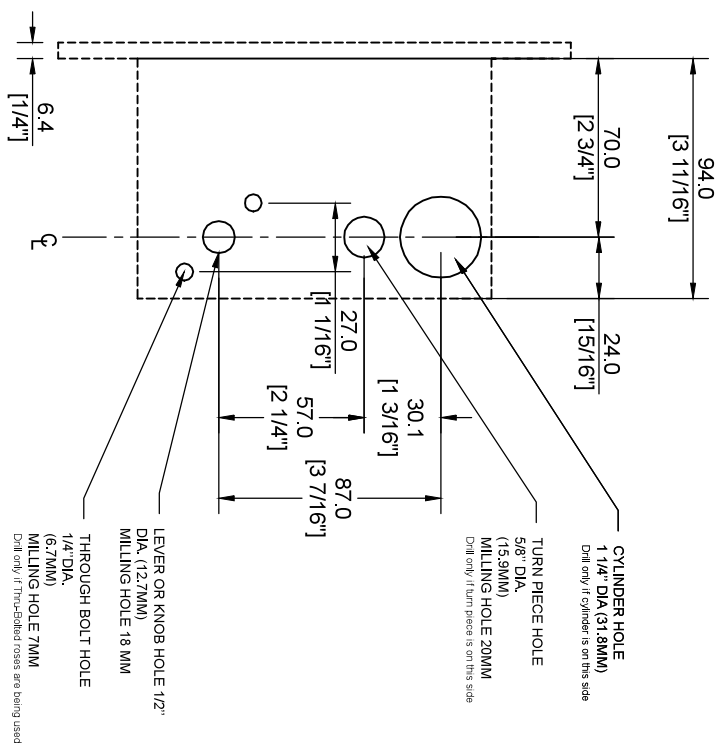
- Template may not be true-to-size. Please use for reference purposes only. DO NOT drill until measurements are verified.



LOCK FACE



MORTISE
 BOX MILLING
 DIMENSIONS



MORTISE BOX

CYLINDER HOLE
 1 1/4" DIA (31.8MM)
 Drill only if cylinder is on this side

TURN PIECE HOLE
 5/8" DIA.
 (15.9MM)
 MILLING HOLE 20MM
 Drill only if turn piece is on this side

LEVER OR KNOB HOLE 1/2"
 DIA. (12.7MM)
 MILLING HOLE 18 MM

THROUGH BOLT HOLE
 1/4" DIA.
 (6.7MM)
 MILLING HOLE 7MM
 Drill only if the drilled roses are being used