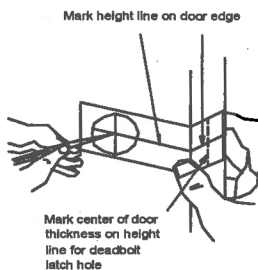


260D

INSTRUCTIONS FOR INSTALLATION OF SINGLE OR DOUBLE CYLINDER DEADBOLTS AND THE REPLACEMENT OF EXISTING LOCKS

FOR USE OF DOORS 1-3/8" TO 1-3/4" THICK
(35mm to 45mm)
TOOLS REQUIRED FOR NEW CONSTRUCTION
1 head screwdriver; 1 2-1/8"(54mm) hole saw;
1 1"(25.4mm) drill; 1 chisel
TOOLS REQUIRED FOR REPLACEMENT
1 head screwdriver

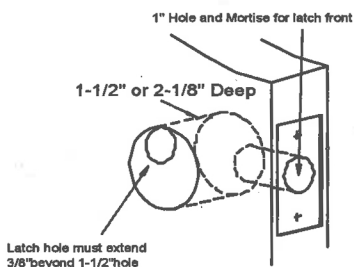
1. MARK DOOR



- Fold and apply template on high edge of door bevel and mark center of door edge as indicated on template at the desired height from floor.
- Mark center hole on door face through guide on template for either 2-3/8" or 2-3/4" (60mm or 70mm) backset.

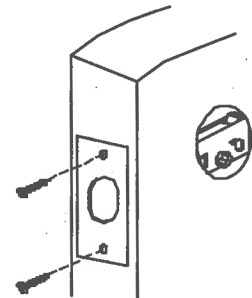
NOTE: BACKSET ON DOOR FACE MUST BE SAME AS BACKSET OF YOUR LOCK.

2. DRILL HOLES



- Bore 1-1/2" (38.1mm) or 2-1/8" (54mm) hole for LOCKSET from both sides of door to avoid splitting wood.
- Bore 1"(25.4mm) hole into door edge for DEADBOLT latch.
- Insert latch in hole. Mark outline of face plate and remove latch.
- Chisel 1/8"(3mm) deep or until face plate flush with door edge.

3. INSTALL LATCH



- Install Latch as the left figure.
- Fasten frontplate with two screws.
- Make sure that the bolt is fully extended out from the door.

4. INSTALL STRIKE

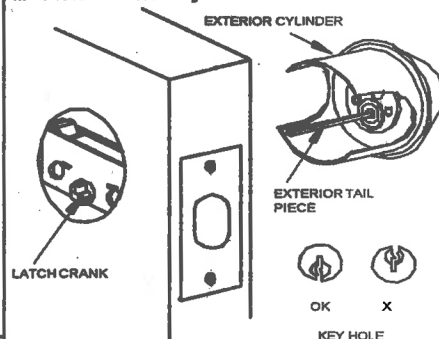
MORTISING FOR DEADBOLT STRIKE



- Mark jamb exactly opposite center of latch hole. (Close door to mark horizontal center line of strike.)
- Bore two 5/16" (8mm) holes above and below height line to a depth of 1-1/8" (28.6mm) depending on bolt projection.
- Match screw holes on strike with center lines on jamb. Mark outline and chisel 5/64" (2mm) deep for strike.
- Install strike and tighten screws.

5. INSTALL CYLINDER

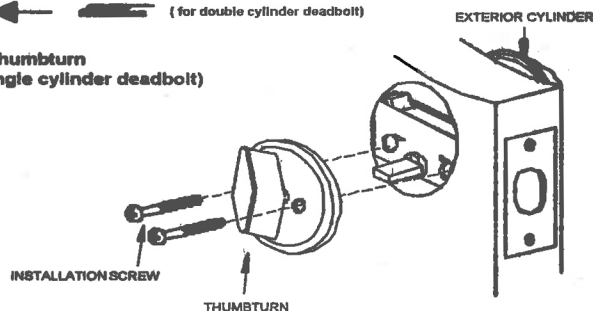
a. Install exterior cylinder



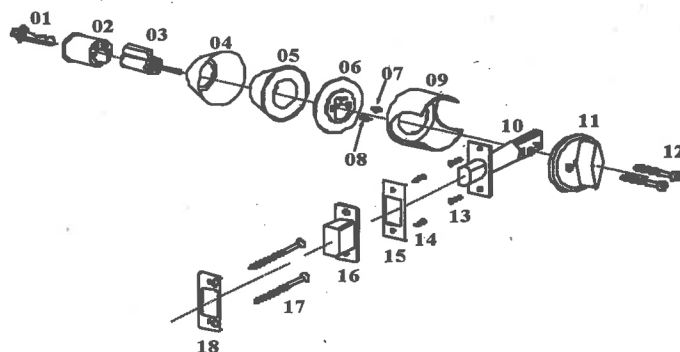
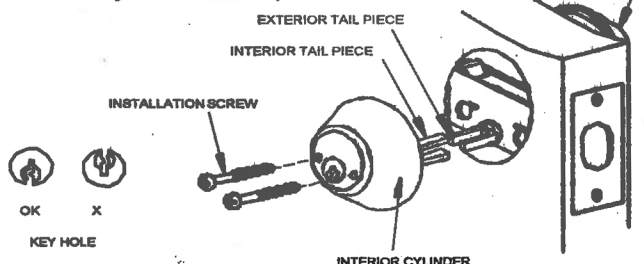
- Retract deadbolt to unlocked position.
- Insert exterior tail piece horizontally through latch crank.
- Press exterior cylinder flush against door.
- Install thumbturn or interior cylinder and tighten installation screws.



b. Install thumbturn (For Single cylinder deadbolt)



c. Install interior cylinder (For Double cylinders deadbolt)



- 01 - Key
- 02 - Key Cylinder housing
- 03 - Key Cylinder
- 04 - Cylinder Cove
- 05 - Cover Support
- 06 - Mounting Plate
- 07 - Mounting Plate Screw
- 08 - Key Cylinder Screw
- 09 - Metal Shield

- 10 - Deadbolt Latch
- 11 - Thumbturn
- 12 - Installation Screws
- 13 - Deadbolt Screws
- 14 - Strike Screws
- 15 - Strike
- 16 - Dust Box
- 17 - Reinforcer Screws
- 18 - Wood Frame Reinforcer