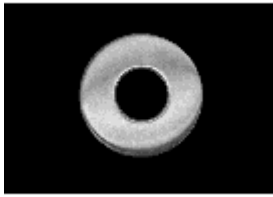
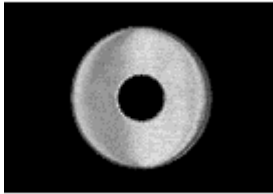


## Roses



### [No.200](#)

- Material: 304 grade stainless steel rose caps on a nylon sub rose
- Surface mounted or through bolted
- Concealed screws
- Available with or without spring assist
- 3/4" predrilled bore hole
- Not for 2 1/8" predrilled bore hole [Learn More](#)

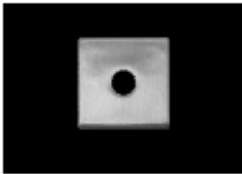


### [No.201](#)

- Material: 304 grade stainless steel rose caps on a nylon sub rose
- Through bolted
- Concealed screws
- Available with or without spring assist
- 2 1/8" pre drilled bore hole

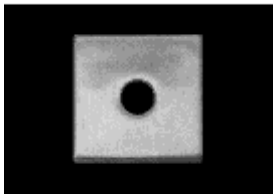
[Click here for lever kits page](#)

[Learn More](#)



### [No.203](#)

- Material: 304 grade solid casted stainless steel
- Surface mounted (exposed screws on both sides)
- Through bolted (exposed screws only on inside)
- Available with or without spring assist
- 3/4" predrilled bore hole
- Not for 2 1/8" predrilled bore hole [Learn More](#)



### [No.204](#)

- Material: 304 grade stainless steel rose caps on a nylon sub rose
- Through bolted
- Concealed screws
- Available with or without spring assist
- 2 1/8" pre drilled bore hole
- Special system to keep our roses square forever [Click here for lever kits page](#)

[Learn More](#)