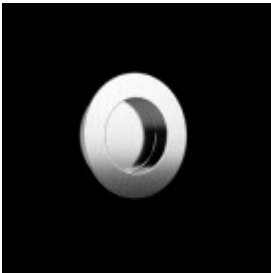


## Flush Pulls



[No.715](#)No.715 Satin Stainless steel oval flush pull with 2 visible screws [Learn More](#)



[No.716](#)No.716 Satin Stainless steel round flush pull with 2 invisible screws [Learn More](#)



[No.717](#)No.717 Satin Stainless steel rectangular flush pull with 4 visible screws [Learn More](#)



[No.718](#)No. 718 Satin Stainless steel, polished stainless steel and black stainless steel. 2 hidden screws for mounting. Available in 3 sizes: 200mm, 300mm and 400mm [Learn More](#)



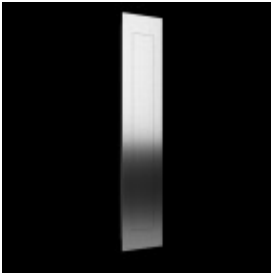
[No.719](#)No719 Satin Stainless steel square flush ring pull. 4 visible screws [Learn More](#)



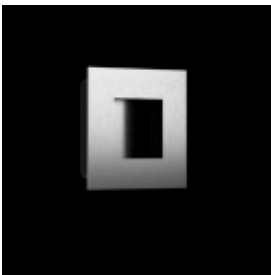
[No.720](#)No.720 Satin Stainless steel rectangular offset flush pull. 4 visible screws and large pocket [Learn More](#)



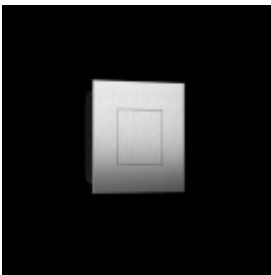
[No.722](#)No.722 Satin Stainless steel square flush ring pull. 4 visible screws [Learn More](#)



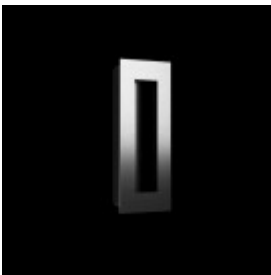
[No.771](#)No.771 Long rectangular stainless steel flush door pull with spring loaded cover [Learn More](#)



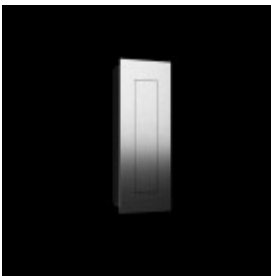
[No.772](#)No.772 Square stainless steel flush door pull [Learn More](#)



[No.773](#)No.773 Square stainless steel flush door pull with spring loaded cover [Learn More](#)



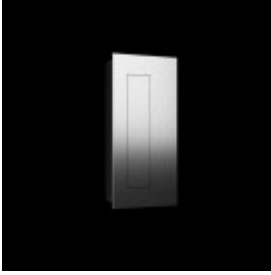
[No.774](#)No.774 Rectangular stainless steel flush door pull [Learn More](#)



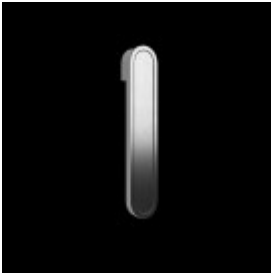
[No.775](#)No.775 Rectangular stainless steel flush door pull with spring loaded cover [Learn More](#)



[No.776](#)No.776 Offset Rectangular stainless steel flush door pull [Learn More](#)



[No.777](#)No.777 Offset Rectangular stainless steel flush pull with spring loaded cover. [Learn More](#)



[No.778](#)No.778 Offset Rectangular stainless steel flush pull with spring loaded cover. [Learn More](#)