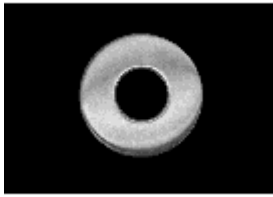
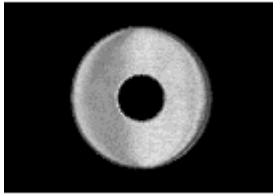


Roses and Backplates



No.200

- Material: 304 grade stainless steel rose caps on a nylon sub rose
- Surface mounted or through bolted
- Concealed screws
- Available with or without spring assist
- 3/4" predrilled bore hole
- Not for 2 1/8" predrilled bore hole [Learn More](#)

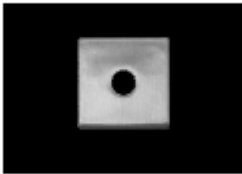


No.201

- Material: 304 grade stainless steel rose caps on a nylon sub rose
- Through bolted
- Concealed screws
- Available with or without spring assist
- 2 1/8" pre drilled bore hole

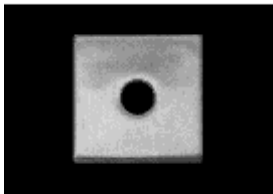
[Click here for lever kits page](#)

[Learn More](#)



No.203

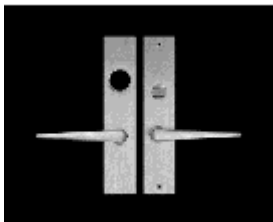
- Material: 304 grade solid casted stainless steel
- Surface mounted (exposed screws on both sides)
- Through bolted (exposed screws only on inside)
- Available with or without spring assist
- 3/4" predrilled bore hole
- Not for 2 1/8" predrilled bore hole [Learn More](#)



No.204

- Material: 304 grade stainless steel rose caps on a nylon sub rose
- Through bolted
- Concealed screws
- Available with or without spring assist
- 2 1/8" pre drilled bore hole
- Special system to keep our roses square forever [Click here for lever kits page](#)

[Learn More](#)



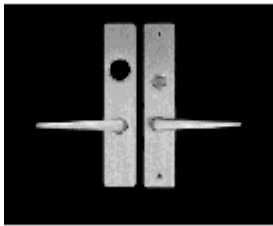
No.240

- Beveled edges
- Solid stainless steel Backplate
- Surface mounted or through bolted
- Custom backplates available to your specifications [Learn More](#)

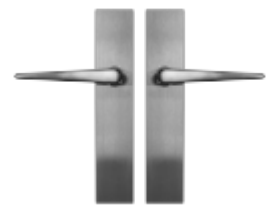


No.242

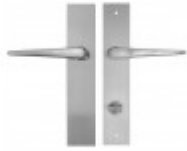
- Square edges
- Solid stainless steel Backplate
- Surface mounted or through bolted
- Designed for predrilled doors with 2 1/8" bore hole
- Custom backplates available to your specifications [Learn More](#)

**No.241**

- 304 grade solid casted stainless steel
- Through bolted
- Custom backplates available to your specifications [Learn More](#)

**No.240 81 American Passage**
[Learn More](#)**No.240 83 American Lock**
[Learn More](#)**No.240 84 American Entry**
[Learn More](#)**No.243 91 European Passage**
[Learn More](#)**No.243 92 European Privacy**
[Learn More](#)**No.243 93 European Lock**
[Learn More](#)

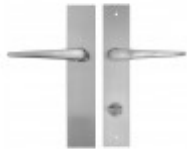
[No.243 94 European Patio](#)
[Learn More](#)



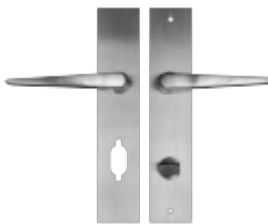
[No.243 95 European Lock](#)
[Learn More](#)



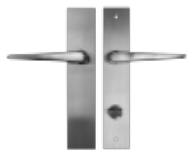
[No.243 96 European Patio](#)
[Learn More](#)



[No.243 97 American Multipoint Entry](#)
[Learn More](#)



[No.244 96 European Patio](#)
[Learn More](#)



[No.244 95 European Lock](#)
[Learn More](#)



[No.244 94 European Patio](#)
[Learn More](#)



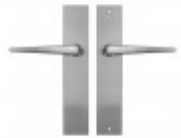
[No.244 93 European Lock](#)
[Learn More](#)



[No.244 92 European Privacy](#)
[Learn More](#)



[No.244 91 European Passage](#)
[Learn More](#)



[No.244 82 American Privacy](#)
[Learn More](#)



[No.242 81 American Passage](#)
[Learn More](#)



[No.242 84 American Entry](#)
[Learn More](#)



[No.241 81 American Passage](#)
[Learn More](#)





No.245 82 American Privacy
[Learn More](#)



No.241 83 American Lock
[Learn More](#)



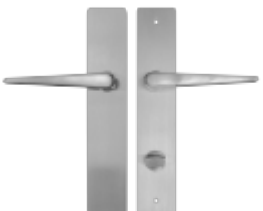
No.241 84 American Entry
[Learn More](#)



No.245 91 European Passage
[Learn More](#)



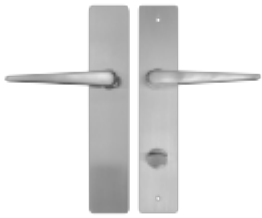
No.245 92 European Privacy
[Learn More](#)



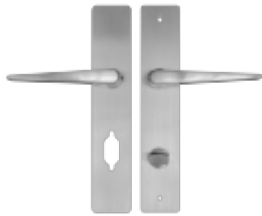
No.245 94 European Patio
[Learn More](#)



No.245 95 European Lock
[Learn More](#)



[No.245 96 European Patio](#)
[Learn More](#)



[No.245 97 American Multipoint Entry](#)
[Learn More](#)



[No.245 93 European Lock](#)
[Learn More](#)



[No.242 83 American Lock](#)
[Learn More](#)